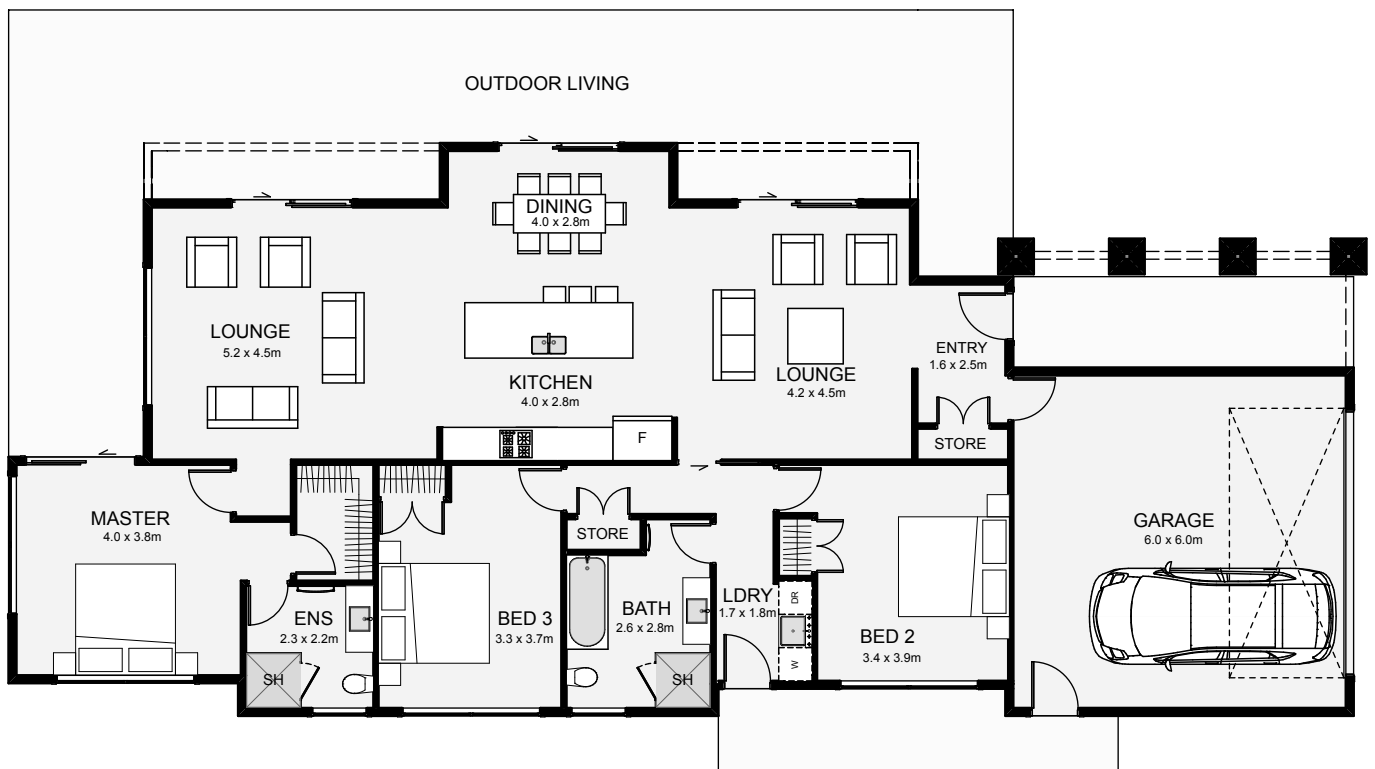


# Fairy Bay



The Fairy Bay is a home designed for narrow sections, however wider sections will just enlarge the outdoor living space which is a great bonus. This home has a number of things going for it, such as the grand covered entry, the dual lounges and the high ceilings in both lounges and the dining. Fixed sun shades provide not only practical uses, but an architectural, aesthetic finish to the home. A variation of claddings can be used to give you the desired look or the materials you love.



Floor Area: 193m<sup>2</sup>



🏠 Head office: 6-8 Meachen Street, Seaview ✉ PO Box 30389, Lower Hutt

☎ 0800 FRIDAY ☎ (04) 595 1287 🌐 www.fridayhomes.co.nz

© Copyright Kakariki IP Limited 2016 trading as Friday Homes.

