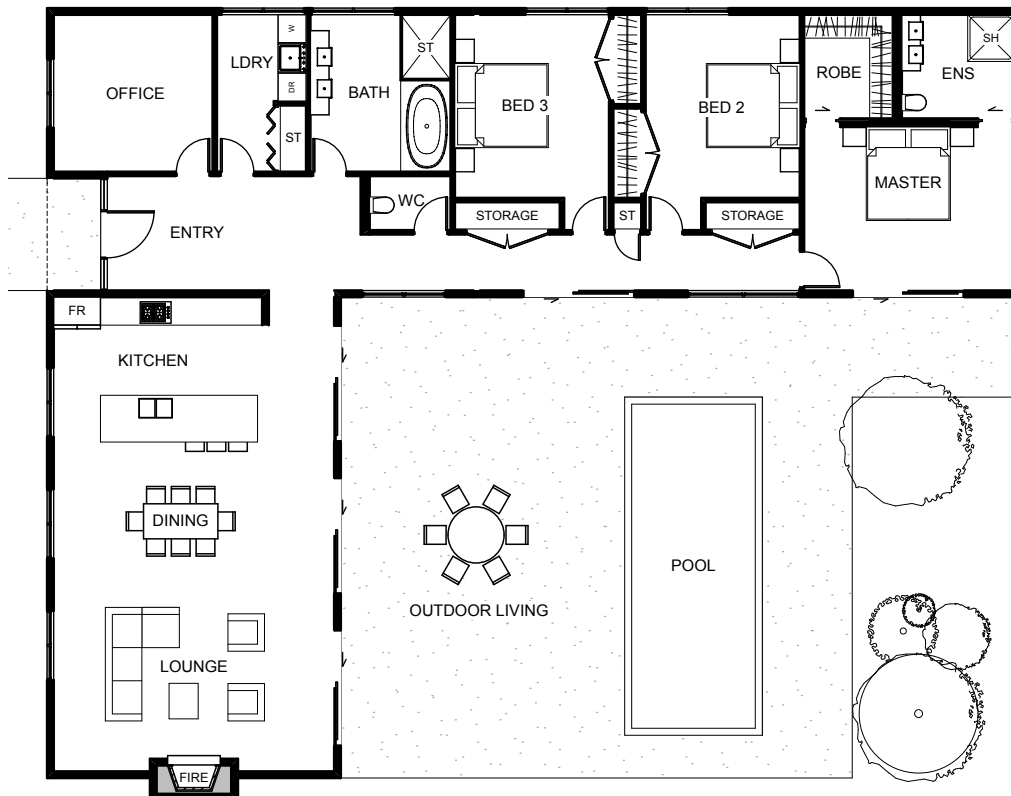


Hallett's Bay



The stylish Hallett's Bay is a beautiful modern home with great features and a distinct family focus. This home provides each family member with individual space, while offering a commercial open plan kitchen, dining and living that brings people together in a relaxed and comfortable way. There is an office space near the entry and the bedrooms flow off a central corridor, including a luxurious master bedroom and ensuite. The Hallett's Bay is your sanctuary.



Floor Area: 191m²



0



3+



2



1

20.8m

16.5m

🏠 Head office: 6-8 Meachen Street, Seaview ✉ PO Box 30389, Lower Hutt

☎ 0800 FRIDAY ☎ (04) 595 1287 🌐 www.fridayhomes.co.nz

© Copyright Kakariki IP Limited 2016 trading as Friday Homes.

