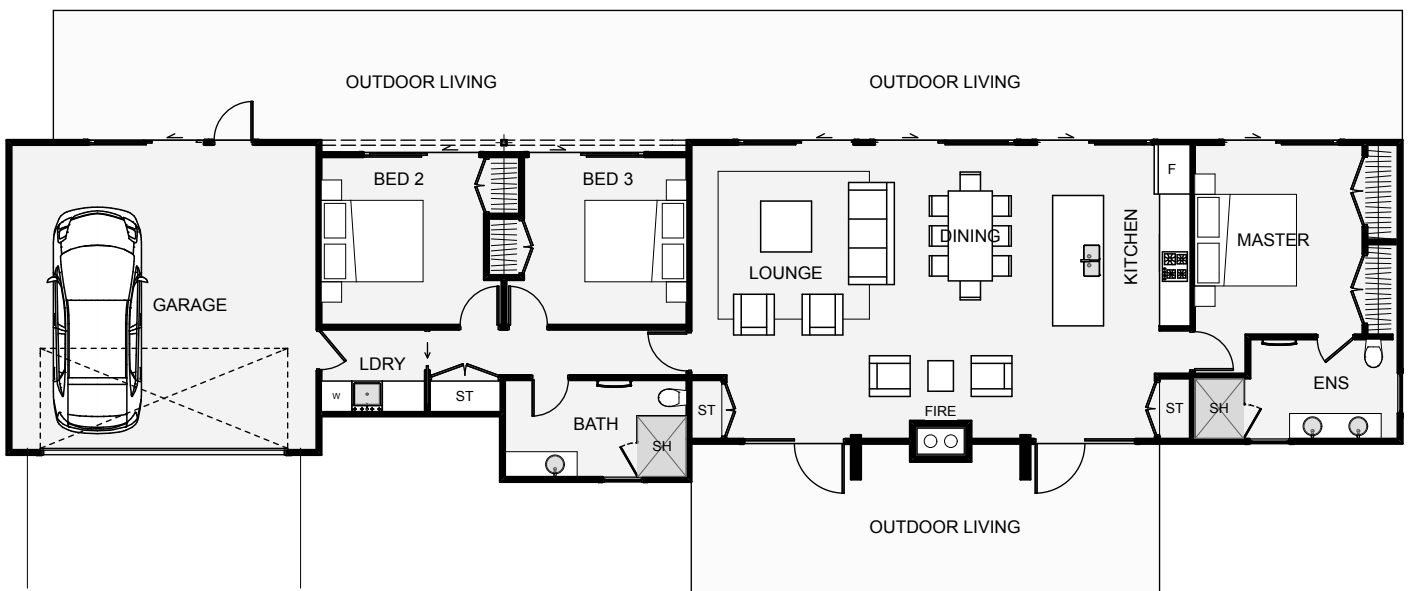


# Hanson Bay



The Hanson Bay is a narrow home designed to have all rooms facing the same way. This makes it easy if you have a great lawn, a view or just want all rooms to get the same amount of sun throughout the day. Something nice about this home is the glass doors and overhead window in the garage, making this large space usable for parties, games room and more. The dual outdoor living gives an option to end the day around a back-to-back fireplace, all while enjoying the evening sunset.



Floor Area: 164m<sup>2</sup>



🏠 Head office: 6-8 Meachen Street, Seaview ✉ PO Box 30389, Lower Hutt

☎ 0800 FRIDAY ☎ (04) 595 1287 🌐 [www.fridayhomes.co.nz](http://www.fridayhomes.co.nz)

© Copyright Kakariki IP Limited 2016 trading as Friday Homes.

