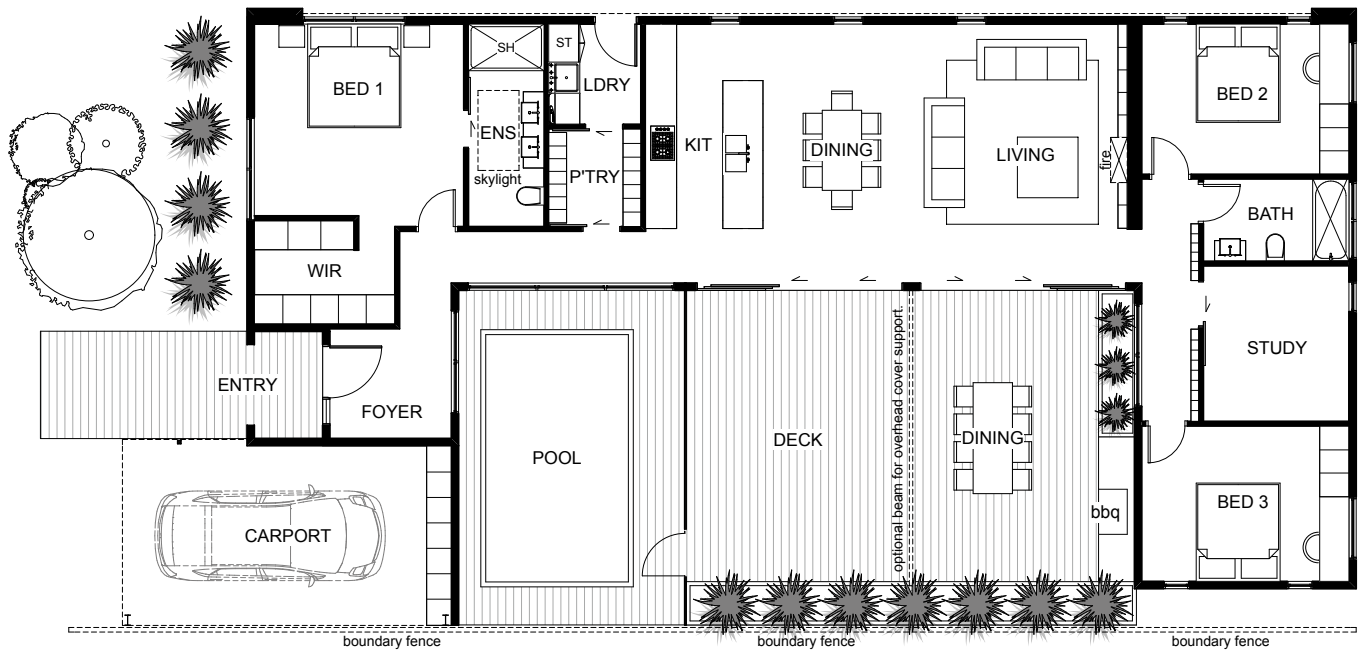


Tasman Bay



The Tasman Bay is a home that welcomes everyone. The indoor and outdoor living spaces are centrally located in the home and create a spacious integrated hub for just the family to relax or for family and friends to join together. The master bedroom is at the front of the home, offering the ultimate privacy. The other bedrooms conveniently surround the main bathroom and are off a hallway on the opposite side of the living area. The Tasman Bay offers relaxing and stylish living at any budget.



Floor Area: 148m²



1



3+



2



1

23.7m

11.7m

🏠 Head office: 6-8 Meachen Street, Seaview ✉ PO Box 30389, Lower Hutt

☎ 0800 FRIDAY ☎ (04) 595 1287 🌐 www.fridayhomes.co.nz

© Copyright Kakariki IP Limited 2016 trading as Friday Homes.

